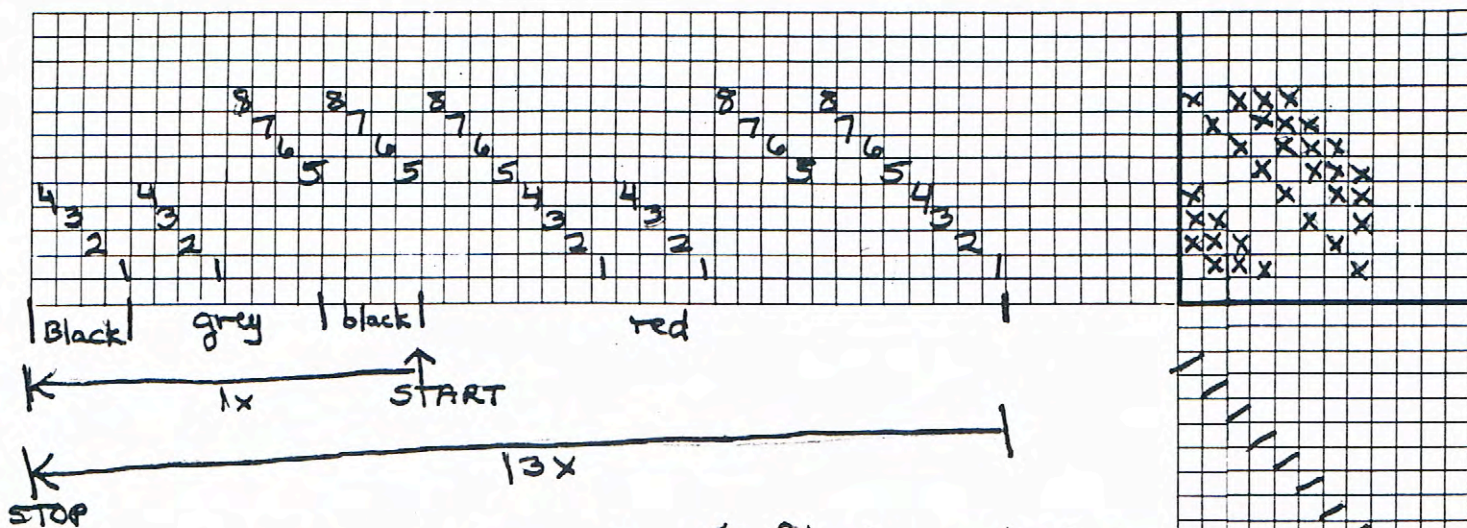


WEAVING RECORD SHEET
HANDWEAVERS' GUILD OF CONNECTICUT



Threading

Tie-up



536 ends + 4 (2 floating selvages on each side)

use folded square to help beat at 45° angle - this gives benefit of "bias" when cutting on straight grain

Weave structure: 8-shaft double twill with breaks at each color change & within red bands

Source: Weavers Journal #45, p. 10

Warp: black, grey, red } 2/6 Merino Wool from Halcyon Yarn (\$19.00/pound)
Weft: all black

Reed: 12 dent Sett: 12 Sley: single

Width in reed: 45" Weft shots per inch: 12

Notes:

2/6 Merino wool comes on 1 pound cones and yields 1600 yds/pound

machine washed w/ Ivory on gentle cycle for 2 minutes

about 10% shrinkage

for a 10 yard warp (8 1/2 yd finished cloth)
I used 1 pound grey, 2 pounds red, 3 3/4 lb black

Date

2/88

Name:

Pam Franck