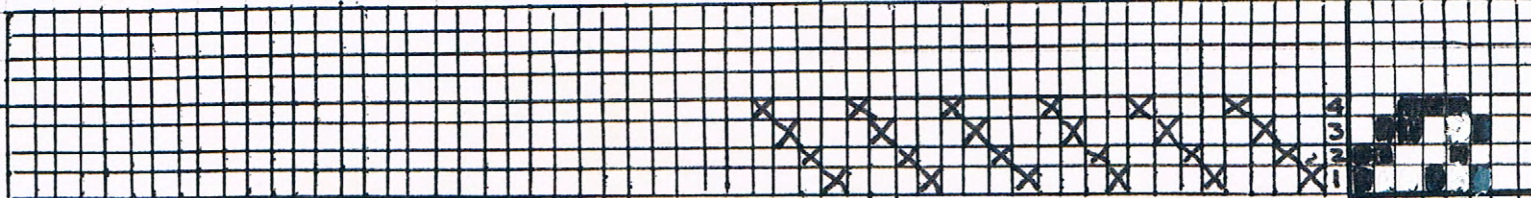


# WILLIAMSBURG SPINNERS AND WEAVERS

TIE-UP



THREADING

WARP: 5/2 PERLE COTTON, OFF-WHITE

WEFT: 3/2 PERLE COTTON, VARIOUS COLORS.

SETT: 15 EDI PPI: 15

PATTERN: TWILL

SOURCE: PICK ANY BOOK ON TWILL WEAVING.

WIDTH IN REED: 14" WOVEN LENGTH: 22"

FINISHING PROCEDURE: MACHINE WASHED & DRIED

FINISHED LENGTH: 20 1/2" FINISHED WIDTH: 12 1/2"

NOTES: TREADLED FIRST 5" AS LEFT HAND TWILL,  
TREADLED NEXT 17" AS RIGHT HAND TWILL.

NAME: JANET HART