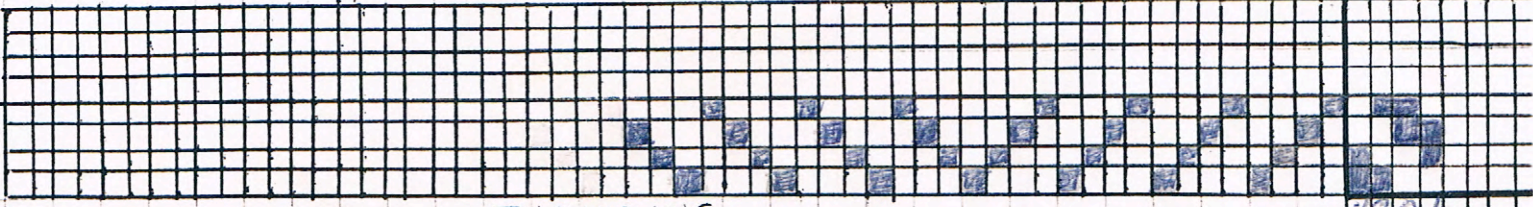


WILLIAMSBURG SPINNERS AND WEAVERS

TIE-UP



THREADING

WARP: $5/2$ pearl cotton

WEFT: $3/2$ pearl cotton

SETT: 15 EPI PPI: same

PATTERN:

SOURCE: *Jona Path - The Handweaver's Pattern Book*

WIDTH IN REED: 14" WOVEN LENGTH: 24"

FINISHING PROCEDURE: machine stitch + hem

FINISHED LENGTH: 22" FINISHED WIDTH: 13"
after washing 18" and hemming 13"

NOTES: 210 warp ends

NAME: *Ann Baker*