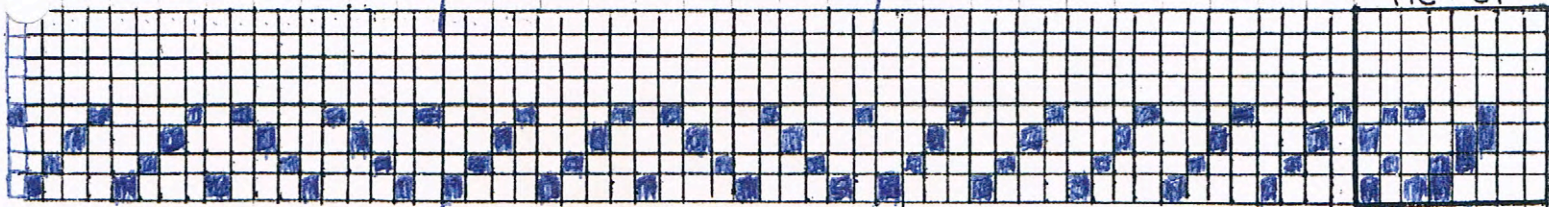


WILLIAMSBURG SPINNERS AND WEAVERS

TIE-UP



END FIELD | THREADING | REPEAT-RIGHT BORDER
 REPEAT FOR FIELD | REVERSE FOR LEFT
 BORDER (1 3 3 4) 5 X 5

WARP: 5/2 pearl cotton

WEFT: 3/2 pearl cotton

SETT: 15 epi PPI: 15 epi

PATTERN: Sandia Valley Linen

SOURCE: A Handweavers Pattern Book
 Marguerite Porter Dawson page 21 bottom

WIDTH IN REED: 14" WOVEN LENGTH: 22" FIELD REPEAT

FINISHING PROCEDURE: hem stitched on loom - cut off
 hand hemmed

FINISHED LENGTH: 20" after finishing - 18" after hemming
 FINISHED WIDTH: 13" BORDER REPEAT
 12" REPEAT

NOTES: 213 ends with 1 floating seluage on each side
 24 ends in each border - (1 3 4) 6 repeats
 144 ends in Field (18 ends in repeat) 8 repeats
 19 ends in end Field
 24 ends in border - (4 3 2 1) 6 repeats
 1 Floating seluage left side
 1 Floating seluage right side
 213 ends total
 1" of plain weave each end
 Weave right border 6 X's
 Weave Field 15 X's
 Weave left border 6 X's

NAME: Jerry Lyons