



# Richmond Weavers Guild

Richmond, Virginia

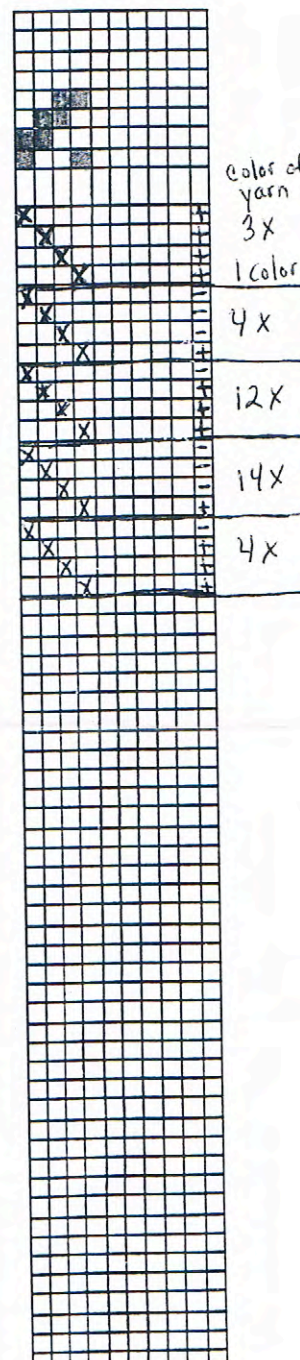
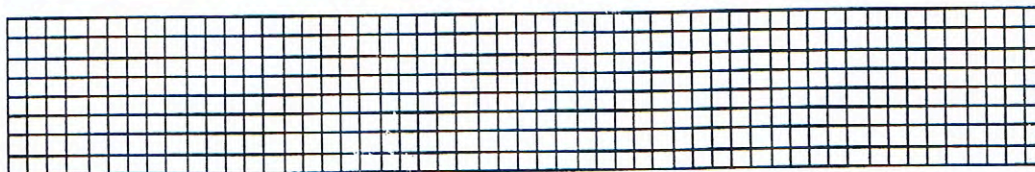
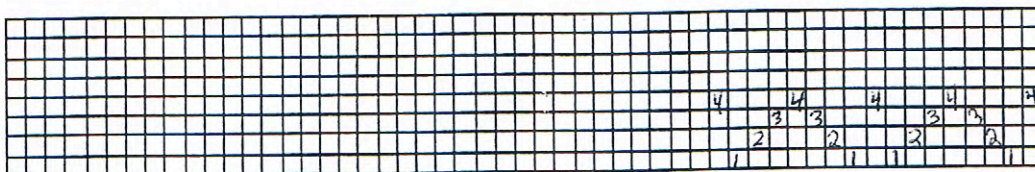
Woven by: Eris Dove Date: Oct sample

Project/use: Rugs

Pattern: Bound Weave on Rosepath Threading

Source: New Key to Weaving  
by Mary Black

Technique: \_\_\_\_\_



Warp: cotton

Weft: rayon/wool blend Rust=(-) Beige=(+)

Tabby: \_\_\_\_\_

Reed: 12 Dent Sley: every other Sett: 6 EPI

Finishing: Machine wash  
line dry

Notes: