

Weaving record sheet

Project Description _____ Date _____

Warp Calculations

Final width (") _____ + Take-up (10%) _____ + Shrinkage (10%) _____ =
 Width in the reed _____ X EPI _____ = Total warp ends _____ +/- Pattern
 adjustment _____ = Ends to wind _____

Final length of weaving/hems or fringes not included (") _____ + Shrinkage (10%) _____
 _____ = Length to weave (without tension) _____ (A)

Hems or fringes _____ + Shrinkage (10%) _____ = Length to allow for hems
 or fringes _____ (B)

(A) _____ + (B) _____ = _____ + Take-up (10%) _____ = Length per article (") _____
 X number of articles _____ = _____ + Loom waste (24"?) _____ = Total warp
 length (") _____ /36" = Yards to wind _____

Warp Needs

Ends to wind _____ X Yards to wind _____ = Total yards of warp _____ /YPP _____
 = Total pounds for warp _____

Type and source	Color	# Units	Unit Put-up	Cost/#

Float Length _____ Reed _____ Sley sequence _____

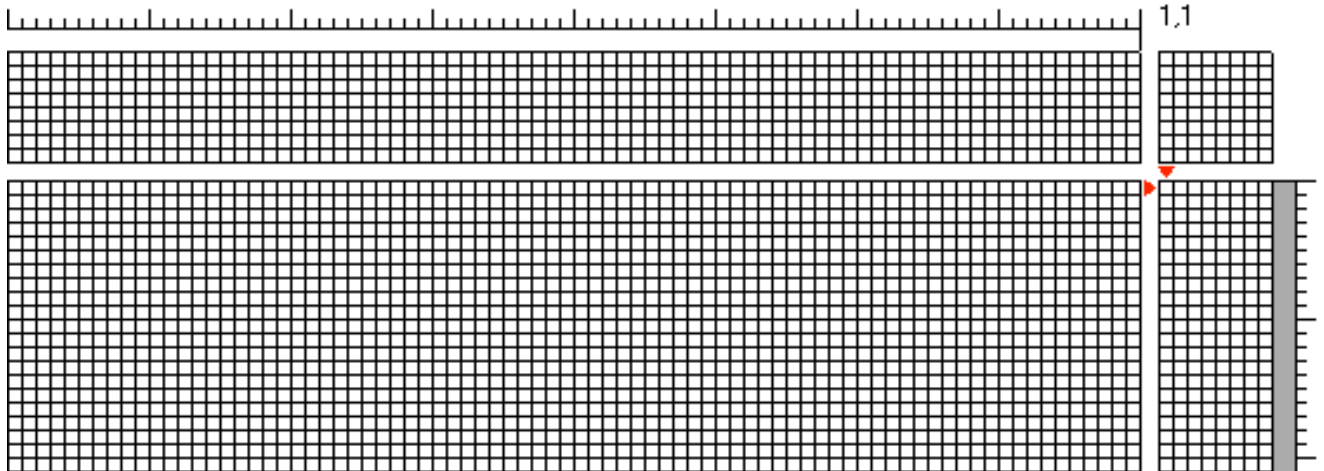
Weft Needs

PPI _____ X (A) _____ = #/Picks _____ X Width in reed _____ = Inches of weft _____
 /36" = Yards of weft _____ /YPP _____ = _____ Total pounds for weft.
 Alternatively, for a balanced weave, purchase same amount of warp or less (no loom
 waste).

Type and source	Color	# Units	Unit Put-up	Cost/#

Weave structure/pattern source: _____

Float length _____



Heddles required: 1 _____ 2 _____ 3 _____ 4 _____
 5 _____ 6 _____ 7 _____ 8 _____

Finishing

Dimensions off the loom: Width _____ % Take-up _____
 Length _____ % Take-up _____

Dimensions after washing: Width _____ % Shrinkage _____
 Length _____ % Shrinkage _____

Total take-up and shrinkage Width _____ Length _____

Finishing processes

Hand _____ Machine _____ Detergent _____ Water Temp. _____
 Soak Time _____ Fabric Softener _____ Cycle: Delicate _____ Normal _____
 Agitation time _____

Dry: Flat _____ Line _____ Tumble _____ Drying Time _____ Heat _____

Pressed _____ Brushed _____ Fringe _____ Hem _____

Cost

Warp _____ + Weft _____ + Other _____ = _____

Selling price _____ Tax? _____

Comments and sample

© Rev. 2005 Margaret Pittman
 This form may be photo copied for personal use only and not for resale. I have strived to write a complete, accurate form. If you have any questions about any of the formulas, please let me know at Heritage Yarns, 5875 Baxter Dr., Jackson, MS 39211-3317 or by phone (601) 956-1478 or email <mailto:handdyer@comcast.net>. Best wishes for good times in weaving!