

Williamsburg Spinners & Weavers Guild

P.O. Box 2086
Williamsburg, VA 23187
<http://Williamsburgspinweave.org>

November 2010

November Meeting

Monday 11/12/10

10:00 am (9:30 a.m. social time) to 1:00 p.m.
Room C, James City County Recreation Center
5301 Longhill Road, Williamsburg

Program

Bring your spinning wheel.
Bring your spindle if you don't have a wheel.
Just come and join us if you have neither.

Refreshments

Savory - Cathy Sterling
Sweet - Marsha Rehkamp

Bash

There will not be a bash in November.



Minutes October 18, 2010

President Rosalie Brown called the meeting to order at 10:00.

Treasurer: No Treasurer's report: Ingrid Kross was not at the meeting.

Librarian: Mary Lou Birns is working on combining the Dolly Gaus bibliography of donated books with the bibliography of the Guild's existing collection.

Newsletter: Barbara Frey is going through the old newsletters as well as samples from the James River and Tidewater Weavers' Guilds.

Historian: Bernadette Marquez requested that the people who are going through the old books return them to her as they finish with them. (Rosalie Brown is perusing old photo albums to identify them, Sandi Petty is going through old program files for ideas, Barbara Frey is compiling old newsletters.)

Programming:

November: spinning wheels

December: Card exchange and luncheon

January: triaxial weaving with ribbon (as seen on the Guild's visit to Workhouse Art Center)

February: possibly book reports from the Guild's library collection?

March: open

April: the silk reeling workshop

September 2011: Jennifer Moore will do a doubleweave workshop

Sometime in 2012: spinning workshop with Judith Mackenzie

Possibility: contacting some of the fiber artists seen at the Workhouse Art Center for one-day workshops or morning programs.

Snacks November: Cathy Sterling savory, Marsha Rehkamp sweet

No Bash in November

Old Business:

Beth Palmer has put together a New Member packet.

It includes:

Dear New Member letter

Guild's by-laws (they were last updated in 1995 and need reviewing)

Library policy (it was last updated in 1993 and needs reviewing)

Workshop policy

She will send the information to David Banks to put on the website. The Guild's library list and membership roster will also be part of the packet.

Judy Mooers reported that 4 Guild members

demonstrated weaving and spinning at the Virginia State Fair. Two other Guilds were also represented. Judy, Sandi & Micki Decker all received ribbons. Sandi received a "Best of Show".

Rosalie will get information on entering the Montpelier show next year.

New Business:

Rosalie asked for the formation of a nominating committee to come up with a slate of officers for the coming year. Beth Palmer, Judy Mooers and Mary Lou Birns offered to serve on the committee.

A motion was made and seconded to buy a subscription to "Wild Fiber" magazine for the Guild. Judy Mooers will bring subscription information to the November meeting for the Treasurer.

MAFA will be in Gettysburg in July, 2011.

Dues for the 2011 year are due at the December meeting. Dues are \$20 a year. The Guild's year runs from January to December.

Show & Tell:

Barbara Frey: moebius scarf and naturally dyed handspun

Judy Mooers: 2 lace shawls and workbook from the Judith MacKenzie spinning workshop

Marsha Rehkamp: doubleweave samplers

Selma Moore: reported on a very nice yarn shop in Raphine, VA called Orchardside Yarn Shop.

Beth Palmer is cleaning her loom room. She brought in several books to give away.

Sandi Petty modeled a cotton chenille bias cut vest she designed and made.

New member Sarah Lauker introduced herself.

Program:

Today's program was a report on the visit to the Workhouse Art Center in Lorton and a show and tell of members' special and/or inspirational objects.

Respectfully submitted,

Marsha Rehkamp

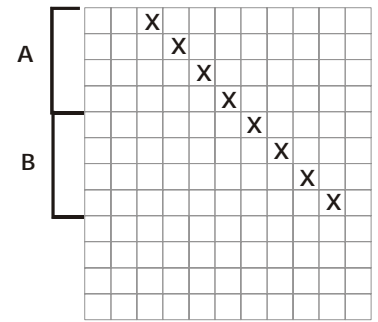
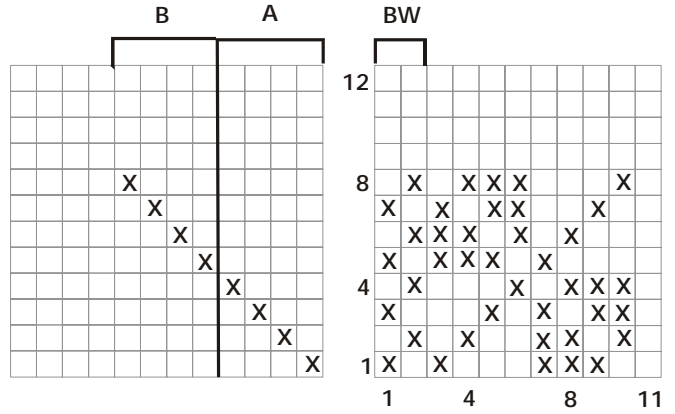
Secretary

Members in attendance:

Virginia Banks, Mary Lou Birns, Rosalie Brown, Birdie Burton, Barbara Frey, Jane Gustafson, Sarah Lauker, Bernadette Marquez, Claudia Melgaard, Selma Moore, Judy Mooers, Beth Palmer, Sandi Petty, Marsha Rehkamp, Cathy Sterling

James River Weavers Sample Sheet

The Stray Lamm, a publication of the James River Weavers of Richmond, Virginia, October 2010. Used with permission.



October 2010

Woven by: Hilary Ely

Project and/or suggested use: dishtowels

Pattern and Source: 8 shaft turned twill

Technique:

Warp: 8/2 cotton - natural, brown, black **Pattern Weft:** 8/2 cotton - natural or brown

Tabby: **Reed:** 7 1/2 dpi

Sleyed: 3 per dent **Sett:** 22 1/2 epi **Woven:** approx. 18 ppi

Dimension before washing: **Length:** **Width:** 20 3/8"

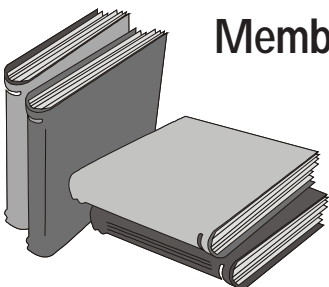
after washing: **Length:** **Width:** 17 1/2"

Finishing: Machine wash and dry

Comments: The warp is differing numbers of each of 3 colors; I threaded block A for the 1st color, block B for the second; block A for the 3rd color, etc. If a block ended in the middle, the next block would start on the odd/even opposite. Woven block A for a while, then block B.

2 towels were woven plain weave.

2 towels were woven in turned twill.



Member Reviews of Books in the Guild Library

We are looking for guild member(s) to read and write reviews of our library books. If you would like to pick out a book from our library lists, email Mary Lou Birns at marylouwb@cox.net, give her the name of the book and the author; she will bring it to the November meeting. Reviews will be given at the February meeting.

Website of Interest

Update to Holiday House website
www.holidayhouse-yolasite.com

Removing Stains from Needlework
<http://www.marthabeth.com/stains.html>

Han dynasty wheel study is after a stone carving from the Eastern Han dynasty, 200 BC-ca25 AD built by Jonathon Bosworth
<http://www.ravelry.com/discuss/search#forum=Journey+Wheel&photo=yes&sort=post&topic=944164>



There are other pictures on Ravelry showing Jonathon spinning on the wheel along with details on the process he followed.

Officers

President
Vice President
Treasurer
Secretary

Rosalie Brown
Sandi Petty assisted by Judy Mooers
Ingrid Kross
Marsha Rehkamp

